

VARISORT

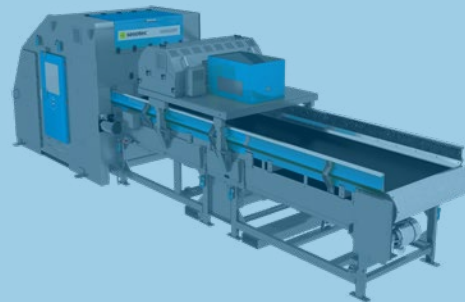
Conveyor belt sorting system for
the recycling industry



VARISORT CONVEYOR BELT SORTING SYSTEM FOR THE RECYCLING INDUSTRY

The VARISORT system is especially designed for the sorting of electrical waste and metals scraps. It is based on a modular concept in which all existing sorting sensors can be combined within one machine, depending on the sortation requirements. A camera sensor which enables identification of diverse material types via color, shape or size, or combination configurations of colors, shapes and sizes. A near infrared sensor to differentiate the various polymers and an inductive metal sensor to detect all metal types.

One of the special feature of the VARISORT system is the inverse sorting capability of material. The combination of camera and metal sensors allows higher purity levels in electronic waste sortation, along with optimizing energy and compressed air consumption.



VERSATILITY

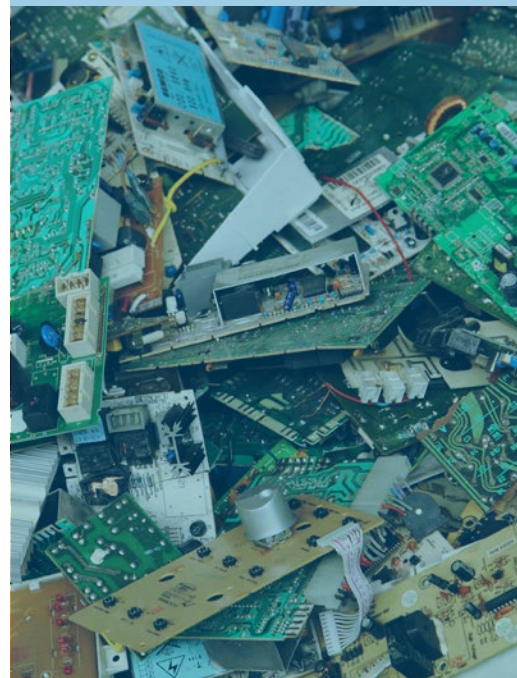
- Modular design
- Multiple sensor options
- User friendly operating interface

MULTI-MARKET

- WEEE applications
- ASR applications
- Metals applications

PERFORMANCE

- Consistent and effective detection / separation
- High throughput
- Inverse Sorting Technology



DATA SHEET

MACHINE WIDTH			
1 024mm	1 536mm	1 920mm	2 816mm*
●	●	●	●

* Not available with 4.4m conveyor belt
 * Not available with M sensor
 * Not available in WEEE version

ALL MACHINES ARE AVAILABLE WITH UP TO 3 SENSORS

C	M	N
Color and Shape Sensor	Metal Sensor optional with detection for stainless steels	NIR Sensor

SPLIT MACHINE	Splitting of the sorting machine for sorting two different material streams in parallel or for 2-step-sorting
BELT LENGTH	4.4m and 6.2m with configurable speed setting
SENSOR UPGRADE	Prewiring for future integration of additional sensors
SESODESK	New operating software combined with new octa-core technology

CONTACT

PELLENC ST

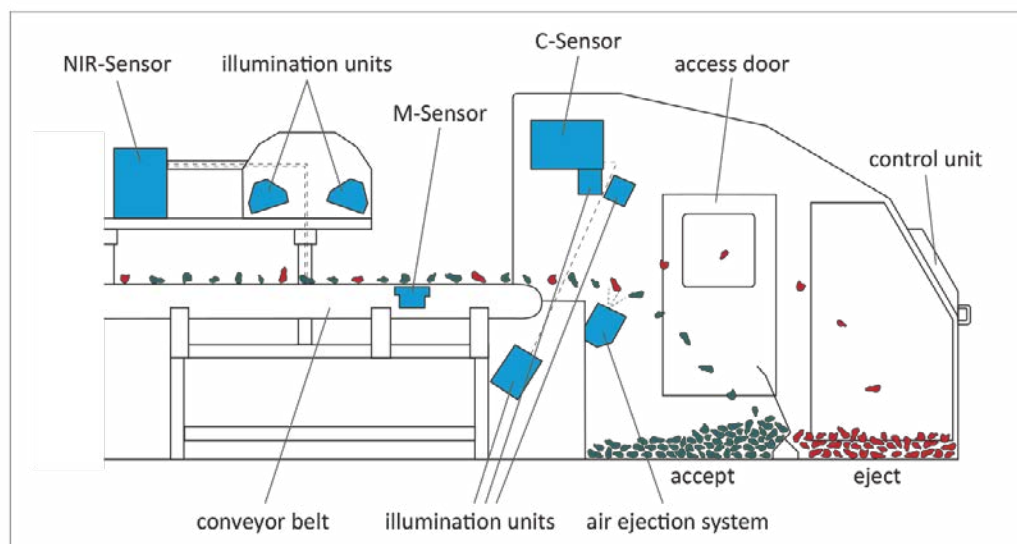
125, rue François Gernelle – BP 124
 84124 Pertuis Cedex 4
 FRANCE

+33 4 90 09 47 90

contact@pellencst.com



PELLENC ST



Function description: WEEE-SORT conveyor belt sorting machine